



Compressor
Voltage Code : FZ

CAJ2428Z-FZ

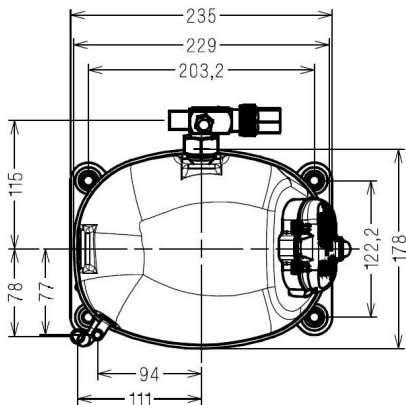
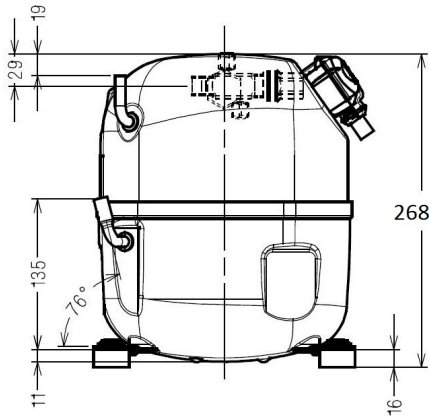
Low Temp. Commercial (BP)

220 - 240V 1~ 50 Hz

R452A / R404A / R448A / R449A

AJ2419Z-FZ1C

| Conditions | Frequency | Nominal Cooling Capacity | | Sound Power ISO3745 / ISO 3743-1 |
|-----------------|-----------|--------------------------|-------|-------------------------------------|
| | | Watts | BTU/h | |
| EN12900 / R452A | 50 Hz | 282 | 962 | 53 dBA |
| EN12900 / R404A | 50 Hz | 306 | 1045 | 53 dBA |
| EN12900 / R448A | 50 Hz | 239 | 814 | 53 dBA |
| EN12900 / R449A | 50 Hz | 239 | 814 | 53 dBA |



* EN12900 : T°Cond. 40.0°C / T°Evap. -35.0°C / T°Return gas temp.. 20.0°C
T°Subcooling. 0.0K

Certificates :



| | |
|--|--------------------------------|
| Displacement (cc) | 15,2 |
| Net Weight (Kg) | 19,4 |
| Oil Quantity (cc) | 475,0 |
| Oil Type | Polyolester |
| Expansion Device | Capillary_Tube/Expansion_Valve |
| Cooling | Fan |
| Main Winding (Ohm) | 3,2 |
| Start Winding (Ohm) | 11,1 |
| Current | |
| RLA (A) | 3,3 |
| MCC (A) | 5,6 |
| LRA (A) | 22 |
| Electrical Equipment | CSIR |
| Overload | MST16APK |
| Time Check | 7.5s - 14s / 13.1 A |
| Open Temp | 105° C |
| Close Temp | 61° C |
| Optional | T0781 |
| Start Capacitor | 88 µF / 330 V |
| Potential Relay | RVA3AH** |
| Pick Up | 190/215V |
| Drop Out | 40/105V |
| Optional | 3ARR18A101B |
| Refrigerating connection for OD | |
| Suction Tube | 12.7 (1/2") |
| Discharge Tube | 6.35 (1/4") |
| Process Tube | 6.35 (1/4") |

Note : Tecumseh reserves the right to change information contained in this document without notification.



Tecumseh

| | |
|--------------------|---|
| CAJ2428Z-FZ | Tension FZ : 220 - 240V 1~ 50 Hz |
|--------------------|---|

| | | |
|--|------------------------|---------|
| Les performances sont données dans les conditions EN12900 : | Gaz aspirés : | 20.0 °C |
| Condition Dew | Sous refroidissement : | 0.0 K |
| The performance data are in EN12900 conditions : | Return gas : | 20.0 °C |
| Dew Condition | Subcooling : | 0.0 K |

© 2021 Tecumseh Products Company
All rights reserved

50 Hz R452A

N°1054

| 4 T condensation | 5 T évaporation | (°C) | -40 | -35 | -30 | -25 | -20 | -15 | -10 |
|--------------------|--------------------|--------|------------|------------|------------|------------|------------|------------|------------|
| 30 | 1 P frigorifique | (Watt) | 257 | 371 | 513 | 687 | 896 | 1146 | 1440 |
| | 2 P absorbée | (W) | 303 | 358 | 415 | 475 | 535 | 594 | 651 |
| | 3 I absorbée | (A) | 2.63 | 2.73 | 2.87 | 3.05 | 3.28 | 3.55 | 3.86 |
| 40 | 1 P frigorifique | (Watt) | 183 | 282 | 405 | 555 | 737 | 954 | 1212 |
| | 2 P absorbée | (W) | 278 | 340 | 409 | 484 | 564 | 647 | 732 |
| | 3 I absorbée | (A) | 2.56 | 2.70 | 2.88 | 3.10 | 3.36 | 3.65 | 3.99 |
| 50 | 1 P frigorifique | (Watt) | | 193 | 294 | 419 | 570 | 754 | 973 |
| | 2 P absorbée | (W) | | 308 | 383 | 467 | 561 | 661 | 768 |
| | 3 I absorbée | (A) | | 2.63 | 2.85 | 3.10 | 3.39 | 3.72 | 4.08 |
| 60 | 1 P frigorifique | (Watt) | | | | 286 | 406 | 553 | 732 |
| | 2 P absorbée | (W) | | | | 432 | 532 | 644 | 766 |
| | 3 I absorbée | (A) | | | | 3.06 | 3.38 | 3.73 | 4.12 |

50 Hz R404A



N°124CS-FZ

| 4 T condensation | 5 T évaporation | (°C) | -40 | -35 | -30 | -25 | -20 | -15 | -10 |
|--------------------|--------------------|--------|------------|------------|------------|------------|------------|------------|------------|
| 30 | 1 P frigorifique | (Watt) | 282 | 403 | 553 | 734 | 950 | 1204 | 1500 |
| | 2 P absorbée | (W) | 325 | 384 | 446 | 508 | 570 | 630 | 685 |
| | 3 I absorbée | (A) | 2.82 | 2.93 | 3.08 | 3.27 | 3.50 | 3.76 | 4.07 |
| 40 | 1 P frigorifique | (Watt) | 202 | 306 | 434 | 589 | 773 | 991 | 1246 |
| | 2 P absorbée | (W) | 303 | 368 | 441 | 519 | 602 | 686 | 771 |
| | 3 I absorbée | (A) | 2.78 | 2.93 | 3.11 | 3.32 | 3.58 | 3.87 | 4.21 |
| 50 | 1 P frigorifique | (Watt) | | 210 | 315 | 443 | 595 | 776 | 989 |
| | 2 P absorbée | (W) | | 338 | 416 | 504 | 600 | 703 | 812 |
| | 3 I absorbée | (A) | | 2.88 | 3.09 | 3.34 | 3.63 | 3.95 | 4.31 |
| 60 | 1 P frigorifique | (Watt) | | | 201 | 300 | 419 | 563 | 733 |
| | 2 P absorbée | (W) | | | 377 | 468 | 572 | 688 | 814 |
| | 3 I absorbée | (A) | | | 3.04 | 3.32 | 3.63 | 3.99 | 4.38 |

1 = cooling capacity 2 = power input 3 = current 4 = condensing temperature 5 = evaporating temperature

Nota : Tecumseh se réserve le droit de modifier les informations contenues dans ce document sans préavis.

Note : Tecumseh reserves the right to change information contained in this document without notification.



Tecumseh

| | |
|--------------------|---|
| CAJ2428Z-FZ | Tension FZ : 220 - 240V 1~ 50 Hz |
|--------------------|---|

Les performances sont données dans les **conditions EN12900** :
 Condition Dew
 The performance data are in **EN12900 conditions** :
 Dew Condition

Gaz aspirés : 20.0 °C
 Sous refroidissement : 0.0 K
 Return gas : 20.0 °C
 Subcooling : 0.0 K

© 2021 Tecumseh Products Company
All rights reserved

50 Hz R448A (*)

N°2735

| 4 T condensation | 5 T évaporation | (°C) | -35 | -30 | -25 | -20 | -15 | -10 |
|--------------------|--------------------|--------|------------|------------|------------|------------|------------|------------|
| 30 | 1 P frigorifique | (Watt) | 314 | 453 | 625 | 835 | 1087 | 1386 |
| | 2 P absorbée | (W) | 332 | 389 | 447 | 506 | 563 | 618 |
| | 3 I absorbée | (A) | 2.53 | 2.69 | 2.88 | 3.10 | 3.36 | 3.67 |
| 40 | 1 P frigorifique | (Watt) | 239 | 357 | 505 | 688 | 908 | 1171 |
| | 2 P absorbée | (W) | 319 | 387 | 459 | 535 | 613 | 693 |
| | 3 I absorbée | (A) | 2.54 | 2.72 | 2.94 | 3.18 | 3.46 | 3.78 |
| 50 | 1 P frigorifique | (Watt) | 165 | 264 | 389 | 544 | 733 | 961 |
| | 2 P absorbée | (W) | 292 | 365 | 447 | 535 | 630 | 730 |
| | 3 I absorbée | (A) | 2.50 | 2.72 | 2.96 | 3.24 | 3.54 | 3.88 |
| 60 | 1 P frigorifique | (Watt) | | | 282 | 410 | 568 | 761 |
| | 2 P absorbée | (W) | | | 415 | 512 | 619 | 735 |
| | 3 I absorbée | (A) | | | 2.94 | 3.25 | 3.59 | 3.96 |

50 Hz R449A (*)

N°1162

| 4 T condensation | 5 T évaporation | (°C) | -35 | -30 | -25 | -20 | -15 | -10 |
|--------------------|--------------------|--------|------------|------------|------------|------------|------------|------------|
| 30 | 1 P frigorifique | (Watt) | 314 | 453 | 625 | 835 | 1087 | 1386 |
| | 2 P absorbée | (W) | 332 | 389 | 447 | 506 | 563 | 618 |
| | 3 I absorbée | (A) | 2.53 | 2.69 | 2.88 | 3.10 | 3.36 | 3.67 |
| 40 | 1 P frigorifique | (Watt) | 239 | 357 | 505 | 688 | 908 | 1171 |
| | 2 P absorbée | (W) | 319 | 387 | 459 | 535 | 613 | 693 |
| | 3 I absorbée | (A) | 2.54 | 2.72 | 2.94 | 3.18 | 3.46 | 3.78 |
| 50 | 1 P frigorifique | (Watt) | 165 | 264 | 389 | 544 | 733 | 961 |
| | 2 P absorbée | (W) | 292 | 365 | 447 | 535 | 630 | 730 |
| | 3 I absorbée | (A) | 2.50 | 2.72 | 2.96 | 3.24 | 3.54 | 3.88 |
| 60 | 1 P frigorifique | (Watt) | | | 282 | 410 | 568 | 761 |
| | 2 P absorbée | (W) | | | 415 | 512 | 619 | 735 |
| | 3 I absorbée | (A) | | | 2.94 | 3.25 | 3.59 | 3.96 |

1 = cooling capacity 2 = power input 3 = current 4 = condensing temperature 5 = evaporating temperature

(*) Veuillez vous référer strictement aux Recommandations d'Utilisation et Bulletins Marketing Tecumseh du fait de la température de reflux élevée pour les applications LBP.

(*) Due to very high discharge temperature especially on LBP conditions, please strictly refer to Tecumseh Guidelines & Marketing Bulletin when using this refrigerant.

Nota : Tecumseh se réserve le droit de modifier les informations contenues dans ce document sans préavis.

Note : Tecumseh reserves the right to change information contained in this document without notification.